

# TN70

Parent sow



**Make your  
business  
a #1 hit!**

## TN70

Hybrid sow based on Norsvin Landrace  
and Z-line (Large White).

For the integrated businesses of the future that want  
to push the limits of productivity and profitability.



# The perfect sow

- Prolific
- Strong
- Social

## Mother of the most profitable finishers

In our vision, the perfect sow meets the requirements of the most demanding pig producers. She fulfills the demands of society for sustainable pig production.

To realize this vision, we don't take the easy road. Millions are spent every year on R&D to search for innovative genetic improvement. Millions of performance records are added to our database for the most accurate selection.

TN70 is the culmination of these breeding efforts. It is our proposition to our customers, pig producers worldwide.

Piglet productivity	★★★★★
Mothering ability	★★★★★
Robustness	★★★★★
Finisher efficiency	★★★★★
Lean meat	★★★★★



In 10 years:  
**34 kg less feed  
needed to market  
TN70 offspring**

= result of our genetic improvement program

## Key product strengths

- YOUR BENEFITS:
- 1

Mothering ability

→

Less human intervention & greater piglet output
- 2

Piglet quality

→

More value; larger & more uniform piglets
- 3

Finisher & carcass quality

→

Lower feed costs, more throughput, higher meat yield

## Breeding goal focus

Reproduction efficiency Key traits	Litter size, piglet survival, # teats, birth weight, weaning weight
Finisher efficiency Key traits	Growth rate, feed conversion, lean meat yield
Sow robustness Key traits	Leg quality, longevity, body condition



# Technical tips & tricks

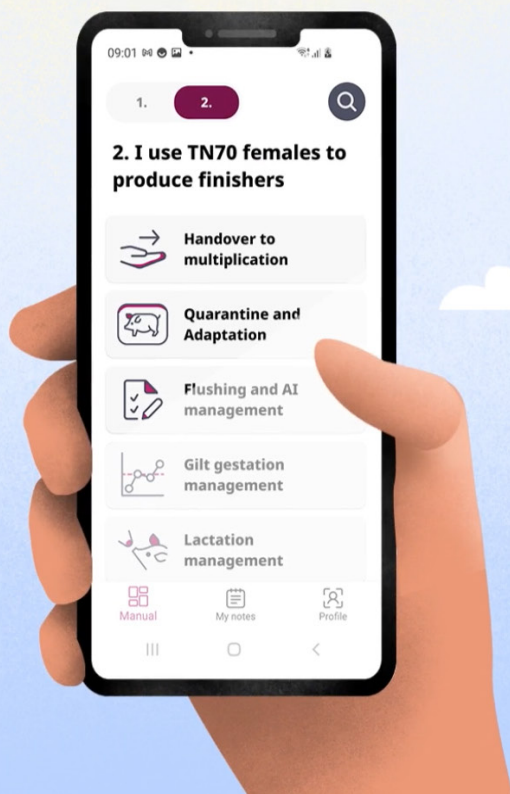
- 1 For InGene farms: Inseminate your TN70 gilts at a higher bodyweight than pure line gilts. The TN70 has a higher production, is leaner and more prolific. Make sure the minimum weight at first insemination is between the 150 kilo and the 160 kilo within the range of 220-230 days.
- 2 Flush TN70 gilts 10 days prior to 1<sup>st</sup> insemination. This will improve the total number born and the uniformity of newborn piglets.
- 3 Some newborn TN70 gilts have black spots inherited from Norsvin Landrace. This is normal.
- 4 Feeding in lactation is important, as is the transition period when moving from gestation to the farrowing room. Make sure to feed enough times per day before farrowing, so that the sow is not limited on energy when farrowing begins.
- 5 Management around the farrowing moment need to be done with care. Don't make noise and play calm & soothing music at low volume in farrowing rooms. This will help your farrowing process!

Get in contact with your local technical specialist for more tips & tricks

Go to [tn70.topignorsvin.com](https://tn70.topignorsvin.com) for more information.

## Topigs Norsvin TN70 app

With this app you have all the feed and management information in your back pocket to unlock the full potential of your TN70 sow!



DOWNLOAD NOW!

